

## Automated Rotary Hi-pressure Belt Washing and Sanitizing System



### Hi-pressure Rotary Belt Washer

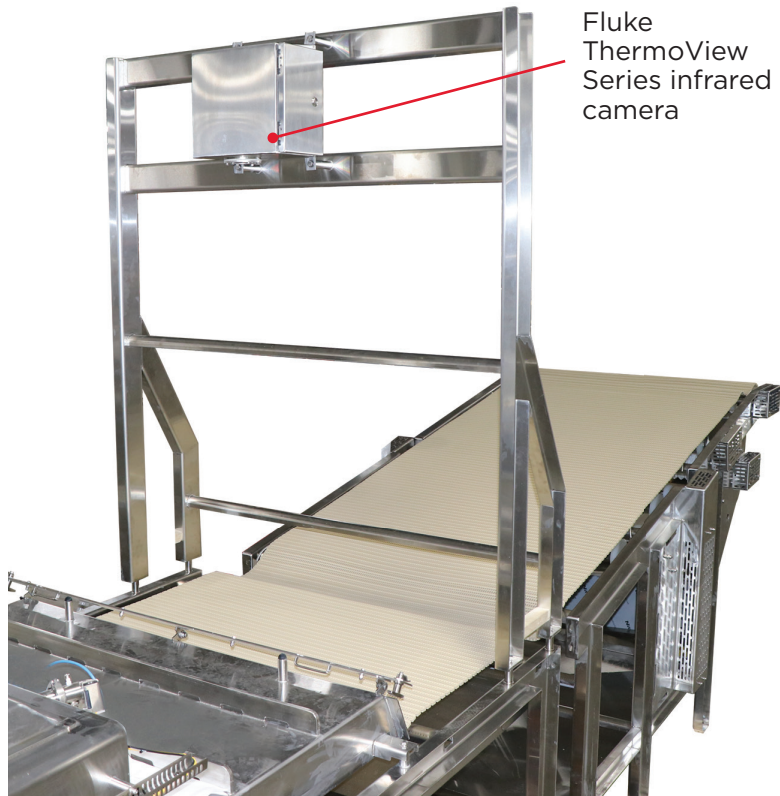
Constructed of 304 stainless material. Has a PLC controlled automated wash cycle with water flow solenoid valves. Belt drying is performed with a High Velocity stainless steel air knife. A stainless drain sump collects wash and rinse water.

- Complete stainless steel housing construction
- Stainless steel rotating high pressure spray bars with nozzles clean both sides of belt
- Solenoid valves supplied
- PLC controlled by a sequential timer program

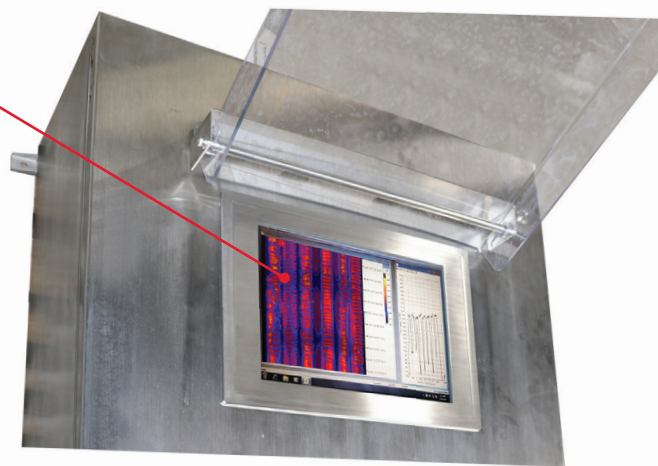
### Sequence/steps of the belt wash cycle

- 1) City water purge (clear the system)
- 2) Low pressure city water presoak
- 3) Foam grease and residue release
- 4) High pressure city water rinse removes foam and sonic blower dries belt
- 5) Sanitizer applied - end of belt cleaning

## Thermal Imaging System for Continuous Temperature Control



Fluke ThermoView Series infrared camera



### Allen-Bradley® 6186M Integrated Display

The 6186M performance monitors are rated Class 1 Division 2 for hazardous locations to withstand extreme conditions. These monitors are best suited for special purpose environments like the food and beverage industries, since they provide excellent protection against heat, shock, and vibration.

### Thermal Imaging System - Option

The AMTek Thermal Image system for continuous monitoring of the cooked product exiting the cooking process, for temperature validation. The system includes a 15" integrated display and computer assembly for continuous visual display of the temperature profiles across the entire belt.



### About AMTek Microwaves

AMTek is a privately held company located in the heart of the United States. We support a complete team of professionals that have been designing, manufacturing, and supporting hundreds of industrial microwave systems worldwide over the past two and a half decades. Our team brings you the experience and expertise in developing microwave equipment for applications in the industrial marketplace for pasteurizing, drying, cooking and tempering a very extensive array of products.

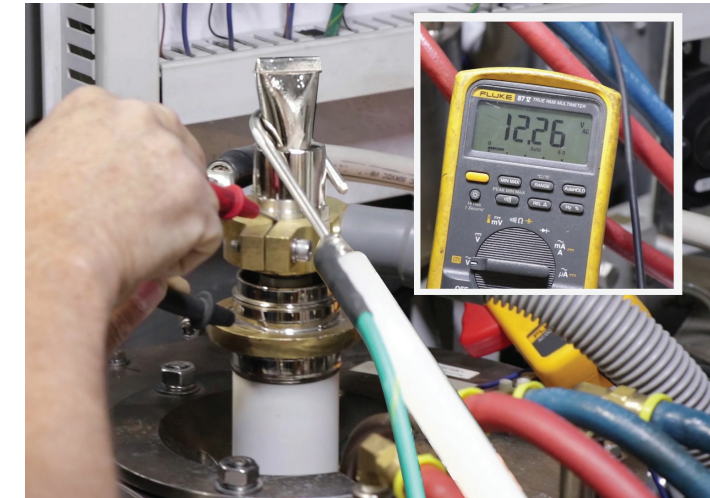
The AMTek team consists of a staff of more than 45 people, doing all functions relating to the production of these high powered systems. Our team designs, fabricates and assembles these high quality microwave systems, custom for each application and facility. Once the systems are installed, AMTek continues in the role to fully support the service of these systems, wherever located in the world.

AMTek provides complete solutions for your microwave systems. We offer complete packages including items such as metal detector systems, chiller systems, fire suppression solutions and custom designed conveyors. We can offer the entire solution to your processing needs.

AMTek is also supported by distributors that represent the company on six continents. Our international team consists of more than 25 reputable companies that provide us with international marketing, sales support, and technical service. These international distributors are a key player in the reputation of our company and are considered an important part of our overall team.



Located in Cedar Rapids, Iowa USA



Service and Support



AMTek Test Lab

**Simple • Efficient • Precise • Flexible**

4115 Thomas Drive SW • Cedar Rapids, IA 52404, USA • 319-365-2000  
sales@4AMTek.com www.4AMTek.com



## Microwave Cooking and Drying Systems MWO Series Pin Choke Oven

Cooking and Drying

**Cook or Dry  
your Products in  
Minutes.**



Microwaves offer many benefits to your operation. A microwave system is the perfect choice for your cooking, drying, or heating needs and has the capability to substantially decrease your processing times. It provides the opportunity to improve quality and maximize throughput by volumetrically heating your product. Microwave processing allows for precise control of product temperatures, ensuring they are within your required limits. Your microwave system will be customized to meet your specific production needs and facility layout. A multiple chamber layout allows for even greater control over your final results.

**Simple • Efficient • Precise • Flexible**

4115 Thomas Drive SW • Cedar Rapids, IA 52404, USA • 319-365-2000  
sales@4AMTek.com www.4AMTek.com

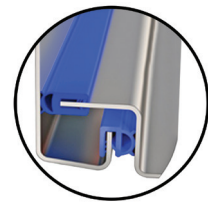


# Microwave Cooking and Drying

**The entire oven is constructed of stainless steel and rated for full wash down.**

**Interlocking access doors**  
on the transmitters, process ovens, and passive microwave suppression tunnels meet applicable government safety standards for operation.

**Suppression tunnels**  
Stainless steel pin choke design eliminates leakage.



**4X Panel Enclosures**  
Double Seal electrical enclosures for sanitary and extreme indoor and outdoor locations.

**Microwave modular chamber** where the microwave process takes place. Multiple chambers can be used for greater control over final results.

**Emergency stop switches**  
E-stop switches will cause an immediate system shutdown, and will identify the condition on all of the ovens control assemblies.

## MWO Series Pin Choke Oven



**Microwave transmitter**  
Either 896 MHz, 915 MHz or 922 MHz and generate 75 or 100 kilowatts of microwave power. Our microwave transmitters can be used in virtually any application requiring microwave power.

**Waveguides**  
Transports the microwave energy to the modular chamber.

**Suppression tunnels**  
Stainless steel pin choke design eliminates leakage.

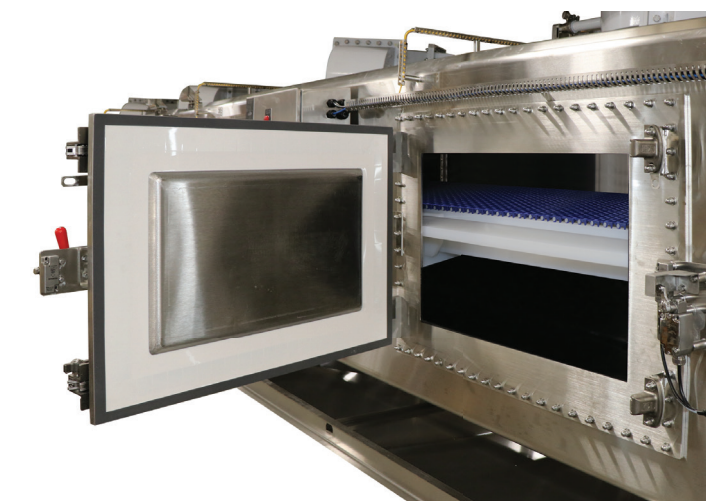
**Conveyor belt**  
A 24 inch wide positive drive, articulated belt of microwave transparent material moves continuously through the oven.



**Transmitter**  
AMTek's microwave transmitters provide dependable power to your industrial microwave systems. They are manufactured using the latest Allen-Bradley controls hardware which enables flexible design and construction. Your microwave transmitter can operate at a frequency of either 896 MHz, 915 MHz or 922 MHz and generate 75 or 100 kilowatts of microwave power. We build our transmitters using transformers designed for the voltage available in the destination country. Our microwave transmitters can be used in virtually any application requiring microwave power. The transmitter enclosure is constructed of stainless steel with an open interior design for easy access for your maintenance personnel. Finger-safe ferruled construction for all wire terminations and dual disconnect breakers ensure the highest level of operator safety.



**Touch controls**  
PLC controls provide accurate process with recipe storage for numerous products.



**Safety**  
Interlocking access doors on the transmitters, process ovens, and passive microwave suppression tunnels meet applicable government safety standards for operation.